

Date: November 19, 1969

MODELS: DN220-5, DN295-5, DN354-6

SUBJECT: Installation of Seventies' Series Main Door on (1968-69)
Models indicated above.

PART NUMBER OF

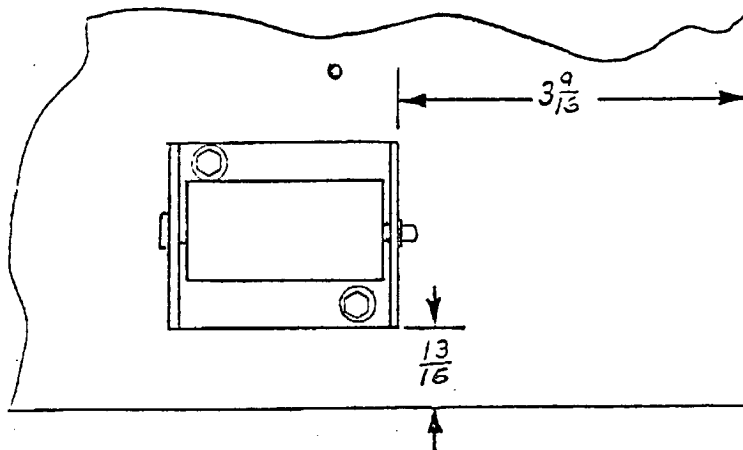
SERVICE DOOR ASSY.: DN220-5 - F143,160,000.03
DN295-5 - F144,160,000.03
DN354-6 - F146,160,000.03

DO THIS:

1. Disconnect old Door Wiring Harness from cabinet.
2. Remove top cabinet hinge.
3. Remove old door.
4. Remove old door lifter from cabinet.
5. Mount new door.
6. Replace top cabinet hinge.
7. Connect new Door Wiring Harness to cabinet.
8. Use roller bracket, in position shown, as template to drill two (2) No. 25 (.1495 dia.) holes.
9. Attach roller bracket and three (3) shims with two (2) self tapping screws.
10. Adjust hinges and latch strike to assure good seal.

HIT PARTS:

1. 1 pc. 142,161,700.03 Ass'y. Door Lifter Bracket
Consisting of:
 - a. 1 pc. A142,160,550.23 Roller bracket
 - b. 1 pc. A301,801,550.51 Roller
 - c. 1 pc. A142,160,540.03 Roller Pin
 - d. 1 pc. 900,900,900.01 Retaining Ring
 - e. 3 pc. A142,160,580.13 Spacer Roller Bracket
 - f. 2 pc. 900,500,520.01 Self Tapping Screws #10-24x5/8 Hex
 - g. 2 pc. 903,000,170.02 Lock Washer



NOTE: Hit parts are not needed when installing
a Seventies' Series Main Door on a Seventies'
Series, DN220-5, DN295-5 or DN354-6.

Dixie-Marco, Inc.
Service Department